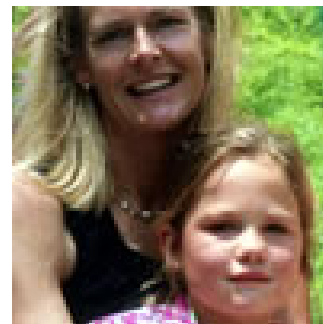


VIRGINIA GRAEME BAKER POOL & SPA SAFETY ACT



CPSC STAFF'S GUIDE TO COMPLYING WITH THE LAW



By December 19, 2008, ALL public pool owners/operators must:

- Install drain covers that meet the ANSI/ASME A112.19.8–2007 standard on EVERY drain/grate. A list of cover manufacturers can be found at www.cpsc.gov/whatsnew.html#pool
- Install an automatic shut-off system, gravity drainage system, Safety Vacuum Release System (SVRS), suction-limiting vent system or disable the drain, if the pool operates off of a SINGLE main drain. Pools and spas with unblockable drains are exempt from this requirement. A list of SVRS manufacturers can be found at www.cpsc.gov/whatsnew.html#pool.
- Ensure that dual or multiple main drains are at least 3 feet apart.

Pools And Spas Not Open On December 19, 2008 Are Not Required To Be In Compliance Until The Day The Pool Or Spa Is Re-opened!

The new Consumer Product Safety Improvement Act requires all new drain and grate covers be certified to all applicable standards starting on November 12, 2008.

CPSC staff recommends that to ELIMINATE and not just MITIGATE the drain entrapment hazard in pools and spas, pool owners should disable old drains or build new pools without any drains and use gutters, overflows and/or skimmers to provide water to the pump.

Have a question or concern about the Pool & Spa Safety Act?

Send an e-mail to info@cpsc.gov

This information was prepared by the CPSC staff; it has not been approved by, and does not necessarily represent the views of, the Commission.

